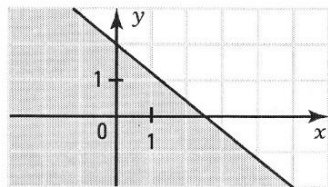
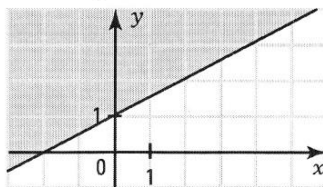


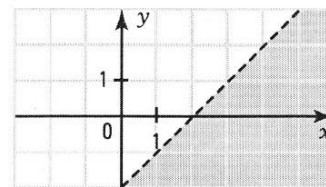
1. a) $4x + 5y - 10 \leq 0$



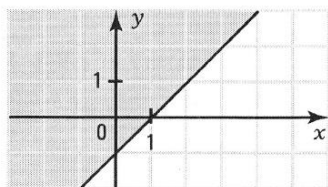
b) $-x + 2y \geq 2$



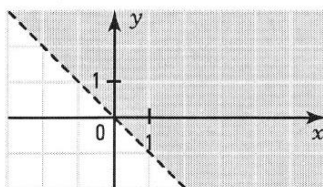
c) $y < x - 2$



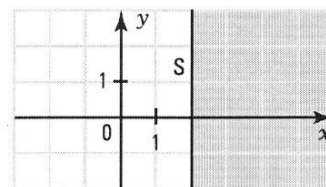
d) $y \geq x - 1$



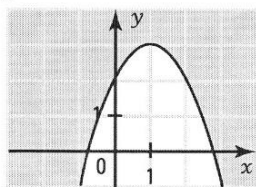
e) $x + y > 0$



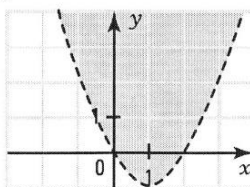
f) $x \geq 2$



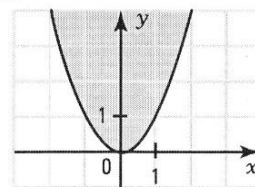
g) $y \geq -x^2 + 2x + 2$



h) $y > x^2 - 2x$



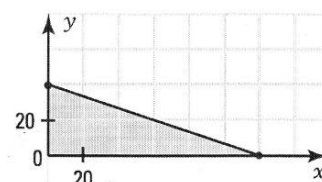
i) $y \geq x^2$



2. a) A parking lot has a surface area of 720 m². Each car occupies an area of 6 m² and each bus occupies an area of 18 m².

x : number of cars y : number of buses

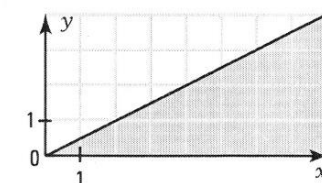
$6x + 18y \leq 720$



- b) On an outing organized by Scouts, there are at least twice as many boys as girls.

x : number of boys y : number of girls

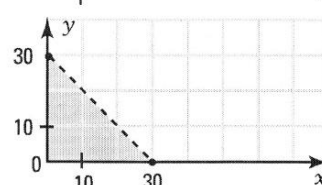
$x \geq 2y$



- c) The perimeter of a rectangular field is less than 60 m.

x : length y : width

$x + y < 30$



- d) Tickets to a concert cost \$10 per adult and \$6 per child. The total revenue from ticket sales is greater than \$600.

x : number of adults y : number of children

$10x + 6y > 600$

