

Page 136

2. a) $-\frac{4}{5}$ b) $-\frac{2}{5}$ c) $\frac{8}{3}$
d) 3 e) $-\frac{25}{18}$ f) 2.75

3. a) $-\frac{1}{2}$ b) $\frac{1}{4}$ c) $-\frac{3}{2}$ d) 2

Page 137

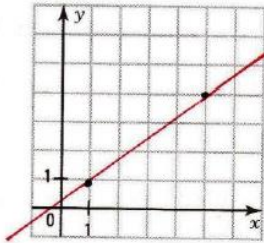
4. $y = 4$

Page 138

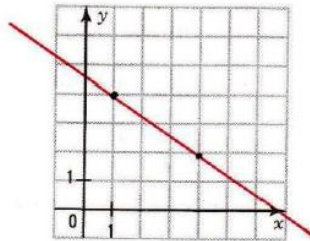
7.

Draw the line passing through A with the slope a .

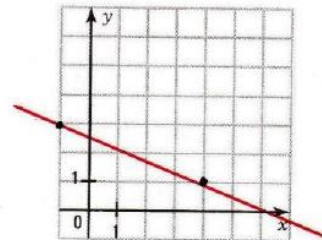
a) A(1, 1) and $a = \frac{3}{4}$



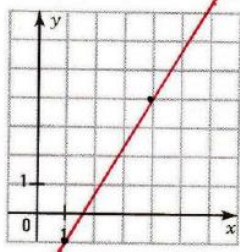
b) A(1, 4) and $a = -\frac{2}{3}$



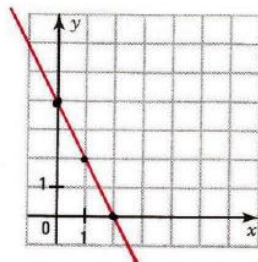
c) A(-1, 3) and $a = -\frac{2}{5}$



d) A(1, -1) and $a = \frac{5}{3}$



e) A(1, 2) and $a = -2$



f) A(2, 3) and $a = 0$

